



www.racerink.com  
561-529-6133

Customer Name:  
Invoice number:  
Date Needed:  
Version:

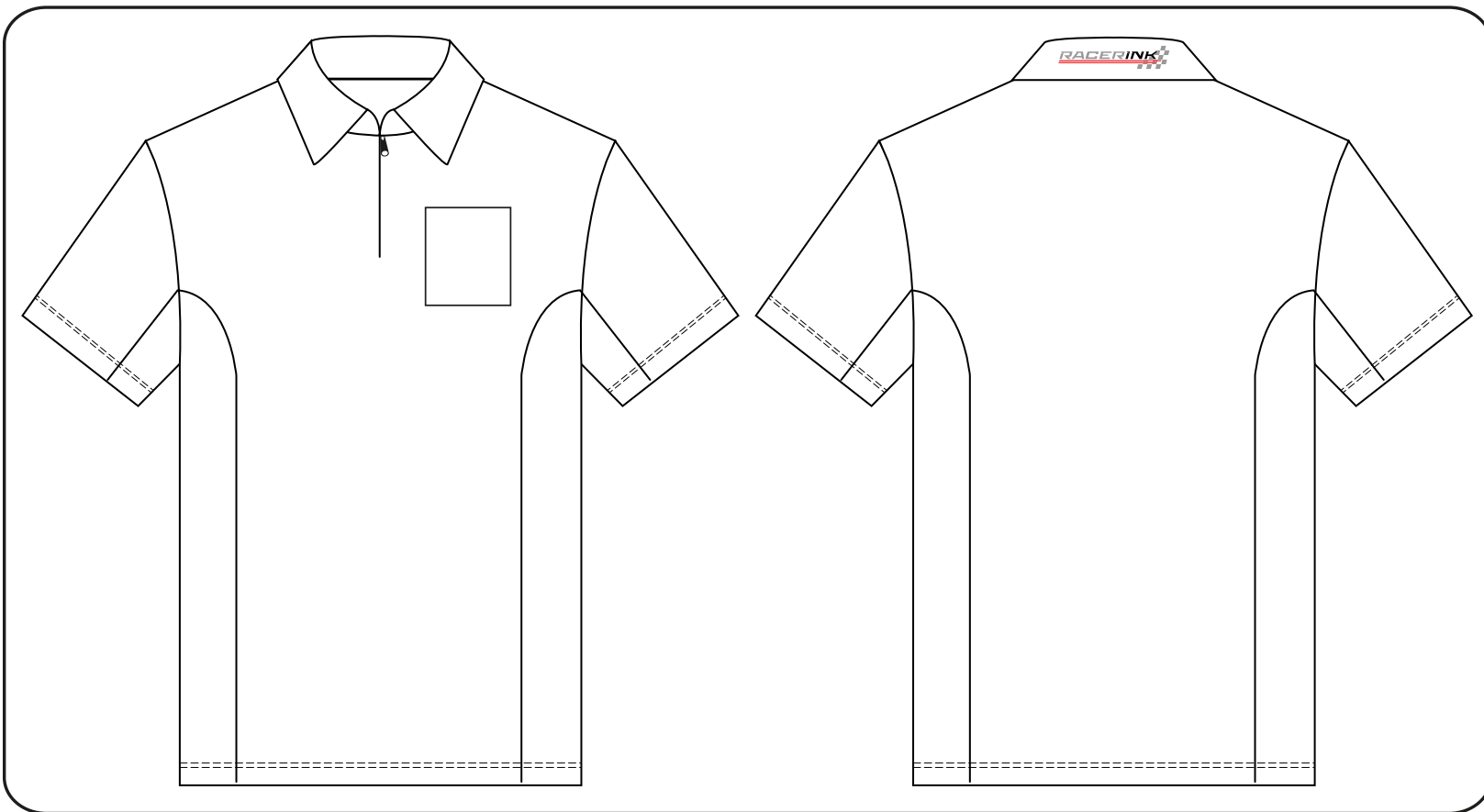
Logo Sizing / Branding Guidelines:

**DISCLAIMER:** Mock-up is NOT to scale and is provided for visualization purposes only. Logos will be standard sizes and the same size on all sized garments unless otherwise requested. Standard Chest and sleeve logo size is 4" Wide.

Garment Type: Polo  
Closure Style: 1/4 Zip Closure  
Side Mesh: YES  
Pocket: YES

SIZING:

XS() S() M() L() XL() XXL() XXXL()



PANTONE COLORS

PMS COLOR CODE

PMS COLOR CODE

PMS COLOR CODE

PMS COLOR CODE

Colors will be matched as to screen unless otherwise specified by Pant-one Matching System (PMS). Colors are subject to variation and may not 100% Match. If PMS colors are supplied, we will match as close as possible but will not be 100% exact match.

**DISCLAIMER. PLEASE READ:**

Please check your proof carefully before you take responsibility of approving. By approving this proof you are declaring it "Approved to move to Production" and assume all responsibility for any errors of art and layout. The graphics on this layout are not fully to scale and do not reflect the exact sizing that will be used on your final garment. This layout is to show color and placement of graphics that are to be printed on your finished product. Logos going over and that run along the seams will not always 100% match and may vary. Colors are subject to variation on the product and may not match 100%. If PMS colors are provided, they will be matched as close as possible, however we do not guarantee exact matches.